

London Advanced Studies Program

Ages 13-16

King's College London
University of London



Contents

King's College London, University of London, *pg. 3*

LondonAdvanced Studies Program, *pg. 7*

Social Programme, *pg. 12*

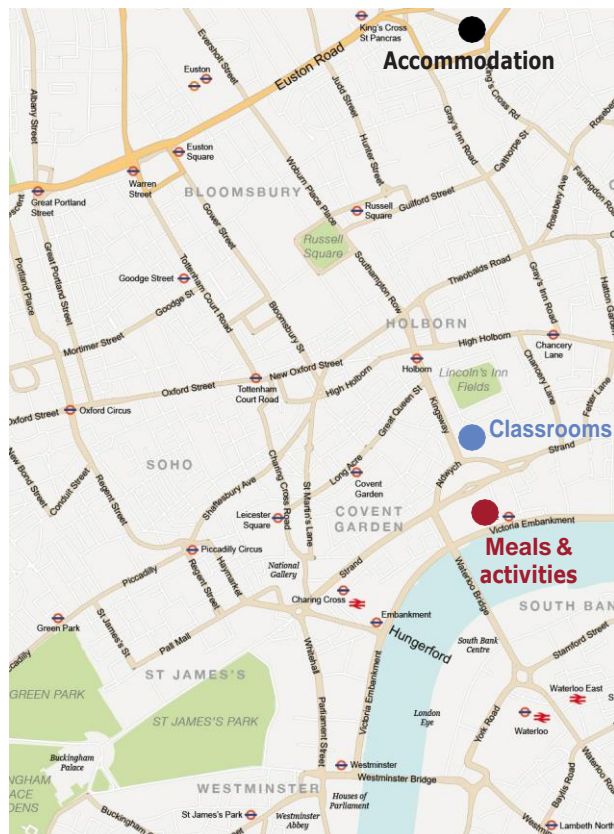
More Information, *pg. 13*

King's College London

University of London • *Ages 13-16*



The Strand campus of King's College London is the most central university campus in London. Classes, activities and meals take place on the Strand, adjacent to the famous Somerset House.





King's College London

University of London • *Ages 13-16*

Key Facts:



Location:

Main Campus: King's College London, Strand, London, WC2R2LS



Bedrooms:

Single bedrooms. Separate male & female accommodation.



Bathrooms:

En-suite bathrooms



Social Space:

Student common areas



Facilities:

Auditorium, high-quality classrooms with smart boards and projectors



Internet:

Wi-Fi available throughout



Security:

No key deposit. Electronic key access.



Airports:

Heathrow LHR1h15min



What to Pack:

Linen provided



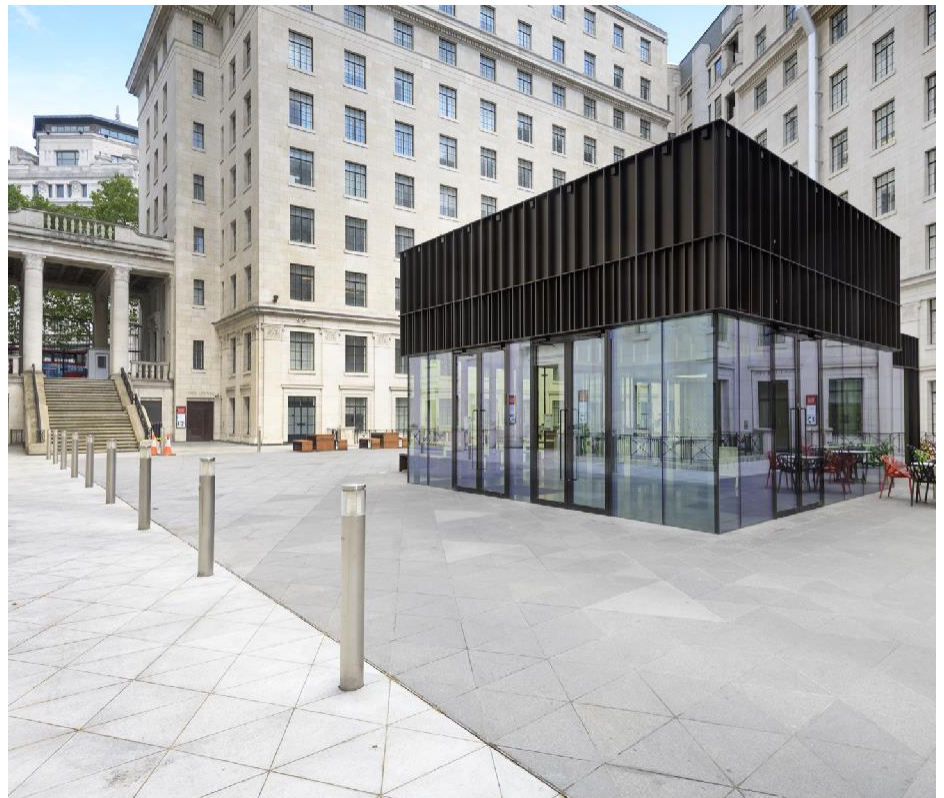
Laundry:

Laundry available free-of-charge



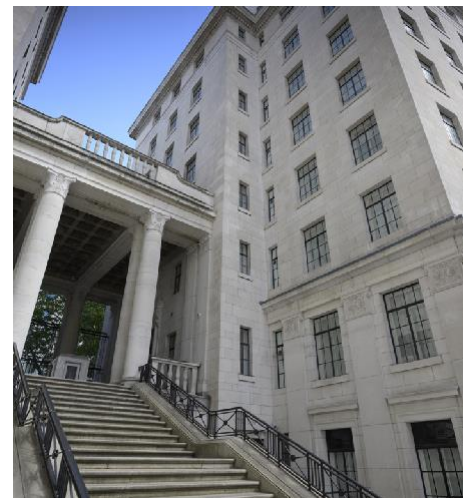
Meals:

All meals included. Packed lunch on excursion days



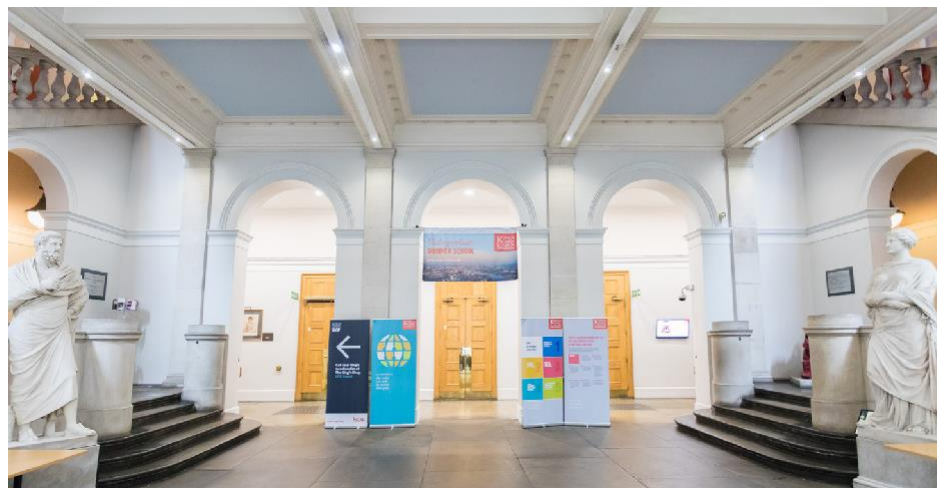
Did you know?

King's College London (KCL) is claimed to be the third oldest university in England (after Oxford and Cambridge). However, rival University College London (UCL) believes KCL is the 4th oldest university, as although KCL received a Royal Charter first, it was actually founded 3 years after UCL.



The small classes make learning easier and more interesting. The activities are fun, original and very diverse!

MAUD, FRANCE





King's College London

University of London • *Ages 13-16*



Accommodation:

Student accommodation is provided at Dinwiddy House, a great zone 1 location just a few minutes' walk from King's Cross-St. Pancras International. All bedrooms are single en-suites.



Laundry:

Laundry is free and available on-site. Students must load and empty the laundry machines themselves (with staff guidance), though laundry detergent will be provided.



Transfers:

We offer a free airport transfer service for all students arriving and/or departing between 10:00-20:00 at:

London Heathrow (LHR)

Students requesting private transfers outside of these destinations and times will be subject to additional charges. Please see the transfer information page for more details.



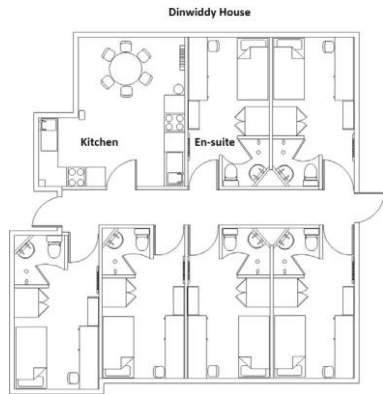
Sample Menu:

Tuesday	Wednesday	Thursday	Friday	Saturday	Sunday	Monday
Breakfast	Breakfast	Breakfast	Breakfast	Breakfast	Breakfast	Breakfast
Fruit Juice, Cereals Mini Bagels & Preserves, Pastries Yogurt & Exotic Fruit Salad	Fruit Juice, Cereals Mini Bagels & Preserves, Pastries Yogurt & Exotic Fruit Salad	Fruit Juice, Cereals Mini Bagels & Preserves, Pastries Yogurt & Exotic Fruit Salad	Fruit Juice, Cereals Mini Bagels & Preserves, Pastries Yogurt & Exotic Fruit Salad	Fruit Juice, Cereals Mini Bagels & Preserves, Pastries Yogurt & Exotic Fruit Salad	Fruit Juice, Cereals Mini Bagels & Preserves, Pastries Yogurt & Exotic Fruit Salad	Fruit Juice, Cereals Mini Bagels & Preserves, Pastries Yogurt & Exotic Fruit Salad
Lunch	Lunch	Lunch	Lunch	Lunch	Lunch	Lunch
Roast Chicken Herb Roasted Seitan & Artichoke Caesar Salad	Baked Bream with Cori&er & Lemongrass Curry Sauce Chickpea & Coconut Curry	Sumac Baked Chicken Breast Spinach & Kale Falafel	Packed Lunch Excursion Day	Beef with Black Bean & Green Pepper Sauce Fried Tofu with Black Bean & Green Pepper Sauce	Breaded Cod Fillet with Chips, Mushy Peas & Tartare Sauce Mediterranean Vegetable Flatbread with Hummus	Chicken Katsu Curry Vegetable Katsu Curry
Served with Grated Egg, Parmesan, Croutons, Anchovies & Dressing	Served with Jasmine Rice & Cabbage Slaw Salad Bar	Served with Cauliflower Cous Cous & Butter Bean Salad Salad Bar		Served with Vegetable Fried Rice Salad Bar	Salad Bar	Served with Steamed Rice, Pickled Ginger, Sugar Snap & Pea Salad Bar
Vegan Brownie & Fresh Fruits	Gelato & Fresh Fruits	Wild Berry Cream Slice & Fresh Fruits		Jam/Vanilla Doughnuts & Fresh Fruits	Selection Of Muffins & Fresh Fruits	Banoffee Muffins Fresh Fruit Selection
Dinner	Dinner	Dinner	Dinner	Dinner	Dinner	Dinner
Quarter Pounder Cheese Beef Burger Beetroot, Goats Cheese & Butternut Burger	Beef Lasagna Macaroni Cheese with Sun Dried Tomatoes & Pesto	Baked Hake Fillet Stuffed Acorn Squash with Cauliflower Rice & Feta	Lemon & Black Pepper Chicken Courgette & Tomato Gratin with Sourdough Crumb	Chicken Kiev Vegetable Kiev	Beef & Tomato Meatballs Quorn & Tomato Stew	Smoked Haddock & Mozzarella Fish Cakes Red Cabbage, Red Onion & Brie Roulade
Served with Chips & Slaw Salad Bar	Served with Garlic Bread, Rocket & Parmesan Salad Salad Bar	Served with Ratatouille & New Potatoes Salad Bar	Served with Roasted Vegetable Cous Cous & Greens Salad Bar	Served with Buttered New Potatoes & Steamed Broccoli Salad Bar	Served with Penne & Garlic Flatbread Salad Bar	Served with Minted Peas & New Potatoes Salad Bar
Lemon Meringue Pie Fresh Fruit Selection	Crème Caramel Fresh Fruit Selection	Belgian Waffle with Banana, Whipped Cream & Chocolate Sauce Fresh Fruit Selection	Peanut Butter & Toffee Cheesecake with Cream Fresh Fruit Selection	Summer Pudding with Vanilla Cream Fresh Fruit Selection	Courgette & Avocado Cake, Summer Berry Compote Fresh Fruit Selection	Belgian Chocolate Cheese Cake Fresh Fruit Selection



King's College London

University of London • *Ages 13-16*

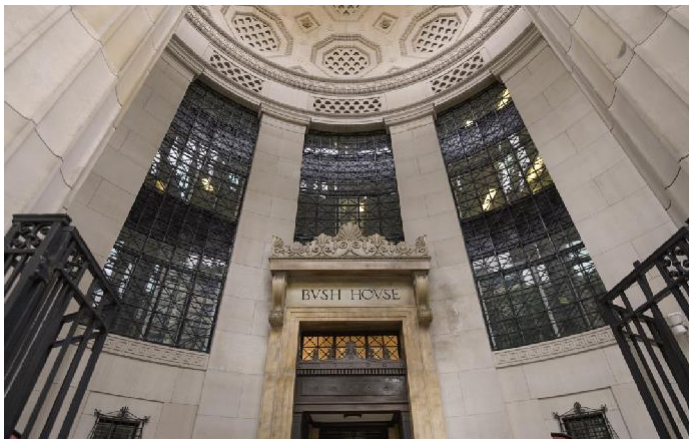


Accommodation

Located only a 3 minute walk from King's Cross station, Dinwiddy House provides excellent student accommodation. Students are accommodated in flats of 6-7 with one staff member in each flat. All rooms are single en-suite and have a shared kitchen facility for hot water and fridges. Dinwiddy is around a 25 minute walk or 17 minute bus ride to King's College.

World Class Teaching Facilities

King's College London is one of the world's leading universities, and our students can take full advantage of the classrooms, seminar rooms and lecture theatres on offer.



Bush House

Since 2012 Bush House has been a key part of the Strand Campus of King's College London and now hosts many of our activities during summer. Previously, Bush House served as the headquarters of the BBC World Service for 70 years. Situated several floors high, the large room offers breathtaking views of the River Thames.



Central London Location











King's College London's Strand campus contains one wing of Somerset House (pictured above), and is located a short walking distance to many of London's most popular areas, such as Oxford Street, Covent Garden and London Bridge.



London Advanced Studies Program

University-level subjects in a campus environment • *Ages 13-16*

Key Facts:

-  **Dates:**
30 June - 28 July 2020
-  **Age range:**
13-16
-  **Hours per week:**
25 hours of tuition per week
-  **Class size:**
Maximum class size of 8 students
-  **Minimum language level:**
C1 (advanced)
-  **Weekly excursions:**
One full-day excursion outside of London every week & daily excursions around the city
-  **Tutors:**
Subjects delivered by expert tutors each morning. Counsellors lead activities and excursions only
-  **Merchandise:**
Branded backpack, water bottle, lanyard & student card for all students
-  **Cohort size:**
Between 25-35 students (expected)
-  **Certificate:**
All students receive a personalised certificate & report card upon graduation



The London Advanced Studies Program (LASP)

allows younger students, aged 13-16, to experience life in higher education.

Based at the world-renowned King's College London, this course aimed at native and high-level English speakers offers a range of academic subjects to aid and prepare students for their future studies at A-level, International Baccalaureate and ultimately university.

Sample timetable:

	TUE	WED	THU	FRI	SAT	SUN	MON
AM	Arrivals	Tutorial 1 Tutorial 2 Study session	Tutorial 1 Tutorial 2 Study session	Excursion: Thorpe Park	Tutorial 1 Tutorial 2 Study session	Tutorial 1 Tutorial 2 Study session	Tutorial 1 Tutorial 2 Study session
PM	Arrivals	Activity: Central London Walking Tour	Activity: Covent Garden		Project Preparation	Activity: Camden Market	Activity: St Paul's Cathedral
EVE	Welcome Games	Activity: London Eye	Activity: West End Show		Activity: Sports	Project Presentations	Activity: End-of-Week Party

London Advanced Studies Program

University-level subjects in a campus environment • *Ages 13-16*



Course Information:

Students of an advanced or native level of English choose two academic subjects to study in a maximum class size of only eight students, taught by expert tutors. The course is taught at a level equivalent to first year of A-level / International Baccalaureate.

In addition to subject tutorials for 3 hours each day, students in London take part in study sessions and weekly projects.

Subjects:

Students choose two subjects to study for 1.5 hours each morning. Subjects are delivered by expert external tutors.

Students must choose their subjects prior to arrival.

SUBJECTS AVAILABLE	LONDON (AGES 13-16)
Advanced Mathematics	✓
Biochemistry	✓
Business	✓
English Literature	✓
Economics	✓
History	✓
IELTS Preparation	✓
Philosophy	✓
Physics	✓
Psychology	✓
Robotics	✓

London Advanced Studies Program

University-level subjects in a campus environment • *Ages 13-16*

Project Sessions

Group projects provide students with experience working towards the same academic goal with other students in a team setting. Students develop teamwork, management and communication skills, in preparation for higher education. Previous projects have included:

UK Capital of Culture

Research, design and presentation are the key skills employed in this project. Working in groups, students research and market a UK city to be advertised to an international audience.

Theatre Production

This project focuses on script-writing, directing and costume design. Students produce short plays and perform on stage in front of their peers.

Technology Expo

Communication and innovation are developed through designing a new technologically based product. Students design and create an exhibition based on their market research to launch their 'new & original' product.

Class President Elections

Centred-round an election campaign, students produce manifestos, posters and give campaign speeches to their peers. The week's project culminates with members of the winning party voted in as class president and vice-president.

Study Sessions

For 45 minutes at the end of each morning, students are given time to complete reading, assignments and problem sets for their following days lessons. Students are supervised and assisted in this session by the Director of Studies.

Tutors

All our tutors have a real passion for their subject as well as a wealth of teaching experience. Tutorial and seminar content is designed specifically by each tutor and is tailored to suit the ambitious students who attend our programmes.

Academic support outside the classroom is provided by the Course Director and a team of Counsellors who are on site 24 hours a day. Our residential staff are all very dedicated and committed to ensuring every student on the programme receives the highest possible level of academic, social and emotional support.



London Advanced Studies Program

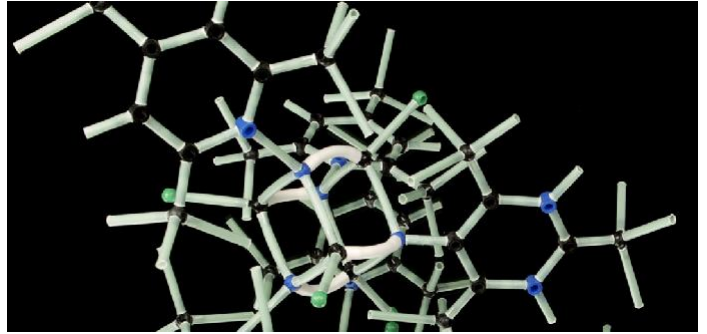
University-level subjects in a campus environment • *Ages 13-16*

Subjects Available



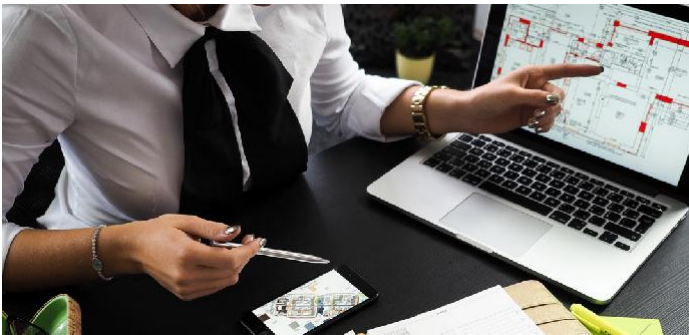
Advanced Mathematics

For those wanting to further their knowledge in one of the most essential subjects that affects a multitude of fields, this advanced mathematics course looks at various areas of algebra, calculus, probability and statistics, complex numbers, defining the derivative, the definite integral and a study of differential and integral calculus.



Biochemistry

Comprehending the foundations of chemistry are fundamental to gaining an understanding of how life is constructed. Chemical bonds, atomic structures and equilibria all have a part to play.



Business

In this course, students will explore the issues affecting multinational companies in terms of finance, economics, human resources, organisational theory and marketing. It provides an excellent foundation in how such global enterprises run and paves the way for a degree in a similar subject, helping students build the skills they need to manage an international brand.



History

Since William the Conqueror led the Norman occupation in 1066, Britain has had 40 kings and queens, invaded almost 90% of the world's countries, and gained and lost an empire. These tutorials study the key turning points in British history.



Philosophy

This course will start from the very origins of philosophical thought, dating as far back as Aristotle and Plato, and will explore the basic principles of philosophy, before moving on to tackle some of the most intricate and fascinating questions which have troubled eminent philosophers in more recent years.



Physics

One of the oldest academic disciplines, including the paradigm-shifting work of Isaac Newton, Physics has changed the manner in which we understand the world. This course covers the major breakthroughs in classic physics, beginning with Newton. Students will gain a foundation in areas of modern physics including relativity, quantum mechanics and cosmology.

London Advanced Studies Program

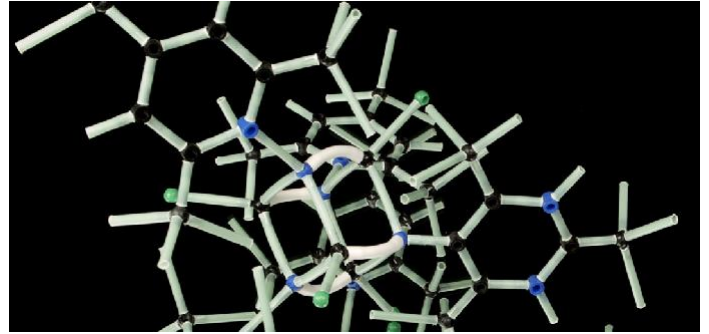
University-level subjects in a campus environment • *Ages 13-16*

Subjects Available



Psychology

The study of psychology leads to a greater understanding of people and thus a background in psychology can boost your employability, whichever career path you choose to pursue. This tutorial covers key issues in social and cognitive psychology, nature vs. nurture, and psychological research methodology.



Robotics

A future with robots as part of everyday life is becoming more and more of a reality. Students can develop knowledge and skills in the field of robotics through a combination of theoretical studies and practical work with construction kits.



King's College London

University of London • *Ages 13-16*

Social Programme Overview

We organise at least seven visits to London attractions over a two-week stay, plus one excursion to another destination in the UK per week.

To enable us to respond to student feedback and requests, the excursions at these destinations are planned and organised by a dedicated Activity Manager. For this reason, it is impossible to provide exact weekly timetables until a few days before the start of the following week. This enables the Activity Manager to minimize any repetition and give students a unique experience every week.

Sample social programme activities and destinations include:



Politics and Royalty Tour

All students take this central London walking tour, visiting historic landmarks such as Buckingham Palace, Trafalgar Square, Horse Guards Parade, 10 Downing Street, Big Ben and the Houses of Parliament.



London Eye and River Cruise

Two fantastic ways of seeing London are either by above on the world-famous London Eye, or by boat on a Thames river cruise tour.



Museums and Galleries

London has a wonderful selection of museums and art galleries across the city, such as the British Museum, British Library, Natural History Museum (pictured), National Gallery, the Tate Modern and Saatchi Gallery.



Landmarks

Students visit a variety of well-known landmarks across the city, such as Tower of London (pictured), Kensington Palace, Piccadilly Circus and St Paul's Cathedral.



Attractions

An important part of the student social programme is to have fun! Visits to major attractions can include Madame Tussauds, London Zoo, London Dungeons, Namco Funscape and Ripley's 'Believe it or Not'.



Full-Day Excursions

One day per week will see the students leaving London entirely. Destinations include: Thorpe Park, Oxford, Cambridge and Brighton

